

INTRODUCING

SUPPORT PROJECTS*



1

SUPPORT TO ACCESS HEALTH APPOINTMENTS

2

ONLINE INFECTION CONTROL TRAINING

3

THREE MONTHS SUPPLY OF P.P.E.

4

CONNECTING CARERS TABLET LOAN

5

CARERS WINTER BREAK

PROJECTS AVAILABLE UNTIL 31ST MARCH 2021**

*TERMS APPLY. SEE INSIDE FOR DETAILS

**EXCEPT CONNECTING CARERS

PROJECTS OVERVIEW

1

SUPPORT TO ACCESS HEALTH APPOINTMENTS

If you are struggling to arrange or attend important healthcare appointments because of your caring responsibilities, we may be able to help.

2

ONLINE INFECTION CONTROL TRAINING

Learn how to reduce the chances of spreading germs and bacteria, to help keep yourself, family, friends and colleagues safe.

3

THREE MONTHS SUPPLY OF P.P.E.

A one off supply of Personal Protective Equipment to help reduce the chances of spreading coronavirus, keeping you and the person you care for safe.

4

CONNECTING CARERS TABLET LOAN

A two to four month loan of a Samsung Galaxy Tab A7 Tablet, enabling you to connect to the internet to access services and support online.

5

CARERS WINTER BREAK

Support to have a short break from your caring role. This could be alternative care for the person you care for, support with a hobby or help to access a new interest.

1

SUPPORT TO ACCESS HEALTH APPOINTMENTS

WHO CAN ACCESS THIS SUPPORT?

Adult Carers of Adults who are struggling to access health appointments because of their caring role.

Carers may have difficulties with:

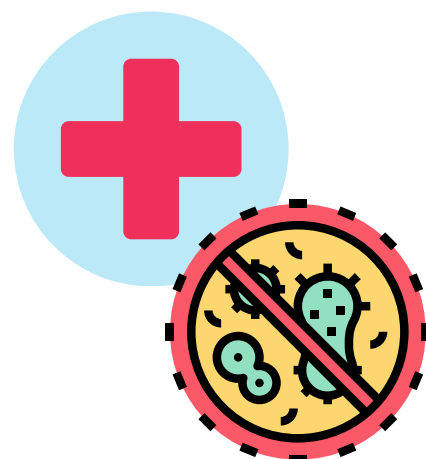
- booking an appointment
- transport to get to appointments
- leaving the person they care for alone

WHAT SUPPORT IS AVAILABLE?

- Help to book an appointment
- Help to arrange and pay for transport
- Help to arrange and pay for alternative care

EXAMPLES OF HEALTH APPOINTMENTS...

- Flu Jabs
- Covid-19 Vaccinations
- Routine appointments for long term conditions
- Healthchecks



2

ONLINE INFECTION CONTROL TRAINING

WHO CAN ACCESS THIS SUPPORT?

Any carer aged 16+

WHAT DOES THE TRAINING COVER?

The training covers infection control in the house and in the workplace.

- Introduction to infection control
- Identifying infections
- How to reduce the risk of infection in the workplace and at home
- The importance of hand washing

HOW CAN I ACCESS THE TRAINING?

You will need access to the internet. If you do not have the internet and/or a machine to access the internet, you may benefit from the Connecting Carers Tablet Loan project.

3

THREE MONTHS SUPPLY OF P.P.E.

WHO CAN ACCESS THIS SUPPORT?

Adult Carers who:

- Do not live with the person they care for
- Provide care 3 or more times a week
- Care for someone who is extremely vulnerable to Covid-19



WHAT IS INCLUDED IN THE P.P.E. PACKS?

The packs include:

- A three months supply of Face Coverings
- A three months supply of Gloves
- A three months supply of Aprons
- A refillable Hand Sanitiser bottle



4

CONNECTING CARERS TABLET LOAN

WHO CAN ACCESS THIS SUPPORT?

All Carers who

- Do not have access to the internet
- Are keen to use technology (no experience needed)
- Will benefit from loaning a tablet in one of the following ways:
 - Reduced contact with other people (by accessing services and support online)
 - Reduced isolation by being able to connect with family and friends online
 - Improved access to information and advice
- You must agree to the terms and conditions in a loan agreement.



This project ends 31st January **2022**

5

CARERS WINTER BREAK



WHO CAN ACCESS THIS SUPPORT?

All Carers who identify the need for a break from their caring responsibilities.

WHAT SUPPORT IS AVAILABLE?

A small amount of funding will be awarded based on eligibility. Funding can be awarded for (but is not limited to):

- The purchase of alternative care
- The purchase of resources to support a hobby
- The purchase of a membership to a club or class
- To pay a family member or friend to provide care
 - This option is only available to adult Carers of adults. Only Formal Care is available for Young Carers and Parent Carers.



HOW TO ACCESS SUPPORT PROJECTS

ADULT CARERS AND PARENT CARERS

Call the Carers' Support Service on 01472 242277 to talk to us about your needs and eligibility to access each project. We do **not** conduct any financial assessments.

YOUNG CARERS

If you are under the age of 18 and care for a family member, you can talk to the Young Carers Team about your needs. Following a conversation with the Young Carers Team, a referral may be made to the Carers' Support Service.

